



LANDSCAPE AREA F _ ALENTO VALLEY

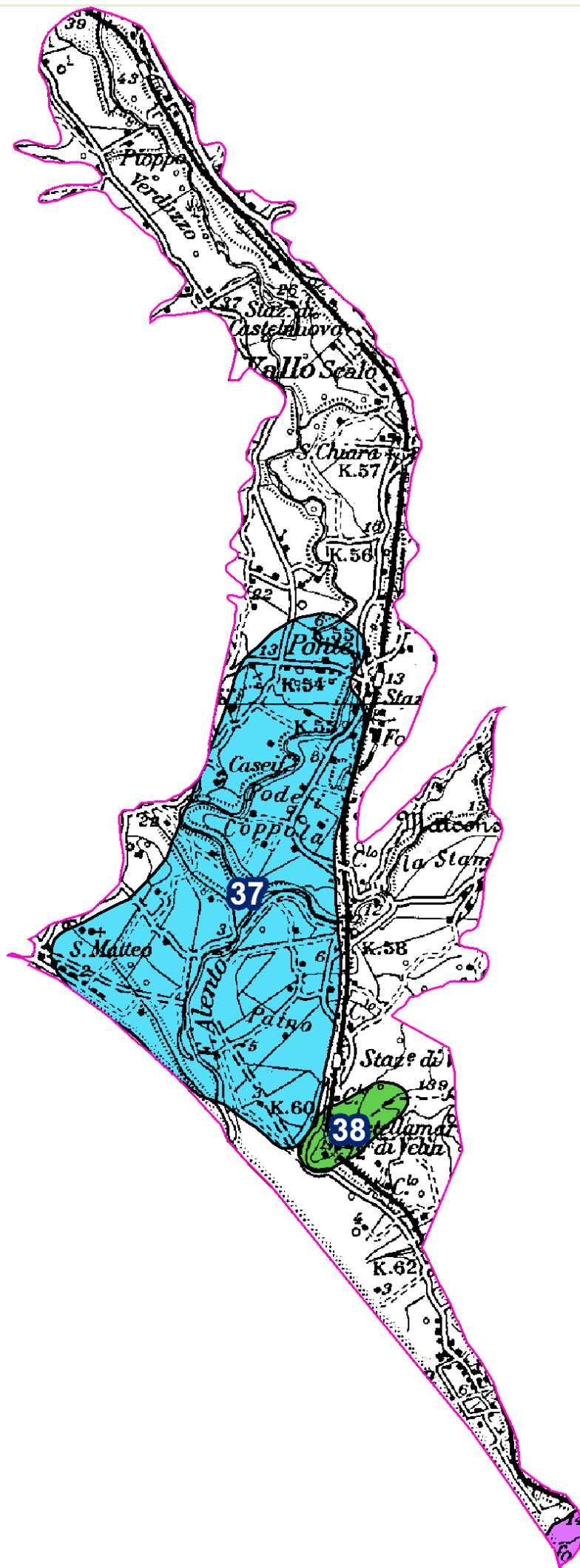
Included Geosites

Id_denomination	Imp.	Id_denomination	Imp.	Id_denomination	Imp.
37_Aleno River	M	38_Conglomerate of Velia	F-C		

M=Main F= Focal C= Complementary S= Secondary



Legend  Landscape area  National Park



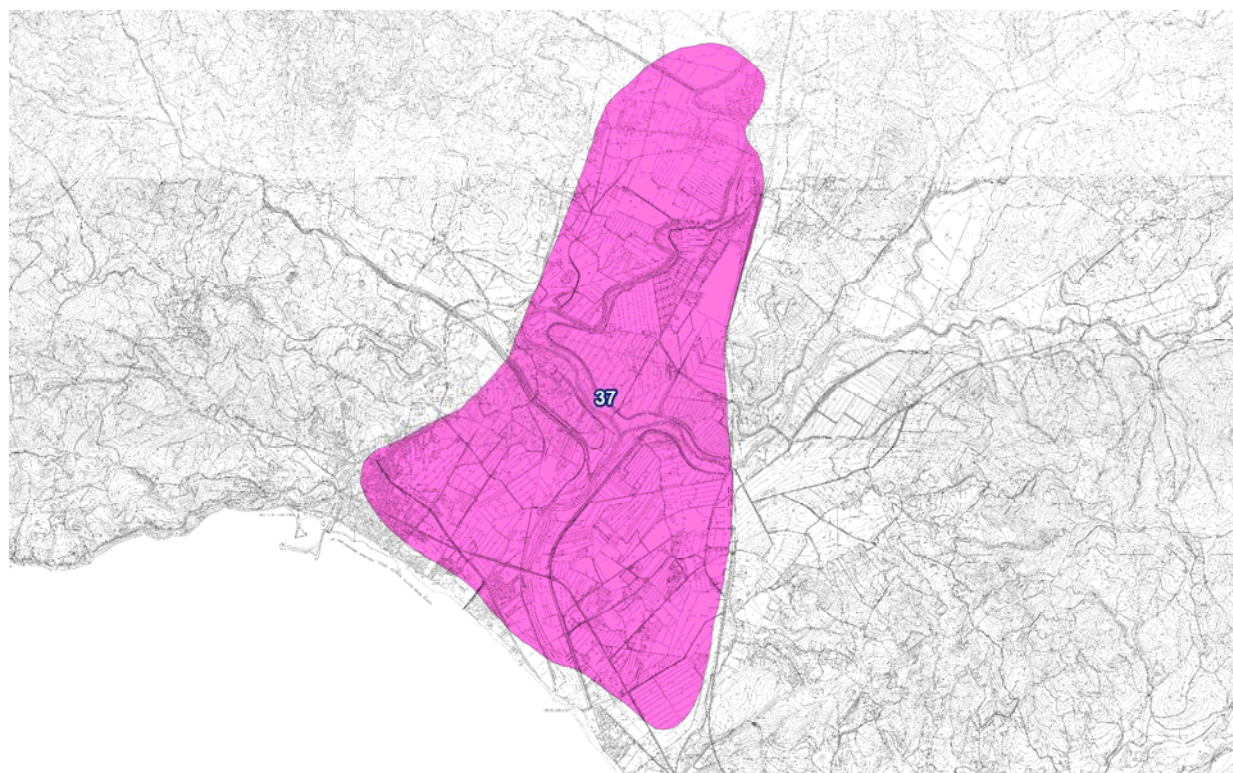
MAIN GEOSITE

37_Alento River

Ubication	Altitude	Accessibility	Fruition
Nation - ITALY	10 m. s.l.	feet	trackway
Region - CAMPANIA			
Province - SALERNO	15 Km. from National Park office	car	recreation
NATIONAL PARK		boat	restaurant
Municipality - CASALVELINO ASCEA		other	exposition

INTEREST (1= primary - 2 = secondary)

GEOLOGICAL		SCIENTIFIC		OTHER	
Structural		Rare (conservation experimentation)	1	Didactical	2
Stratigrafical	1	Popularization		Hikers/trecking	
Geomorphological	1	Rappresentative	2	Archeological	2
Sedimentological		Mondial/European		Naturalistic	
Paleoenvironmental	2	National/Local		Historical/religious	
Mineralogical					
Hydrogeological					
Paleontological					
Karsic					
Paleobiological					



Cartography of Main Geosite

DESCRIPTION

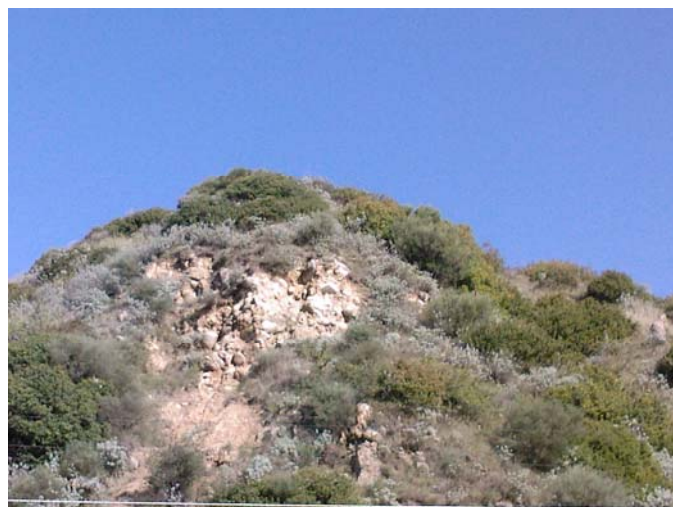
The landscape area is characterized by the typical alluvial clastic sequence in the upstream portion, with intercalated fluvial-marsh and to fill with the earth of the historical period (see historical shoreline changes in the archaeological sites of Velia). The Alento valley is a small coastal Graben. This area contains two single geosites: the Alento River like as example of coastal alluvial plain with more orders of dune cordons witnesses of late Versilian- Holocene marine ingression (last 10,000 years); Velia geosite, outcrops of Velia conglomerates in which it was built the ancient Elea-Velia (archeological site).



Geosite 37_ Plan of Alento river



Geosite 38_ Ancient Velia



Geosite 38_ Conglomerate of Velia